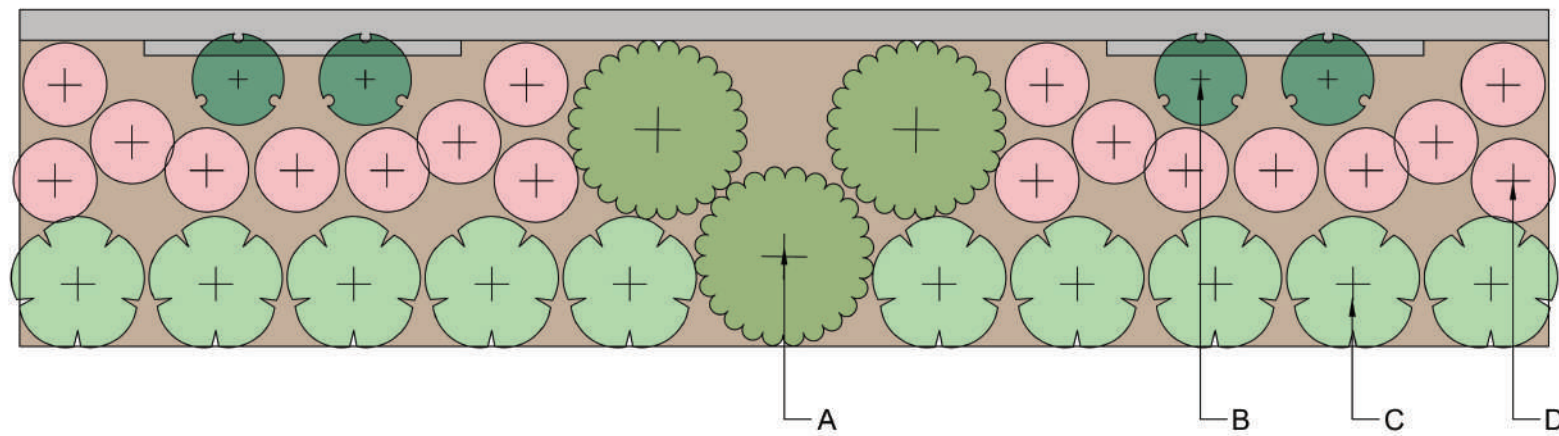
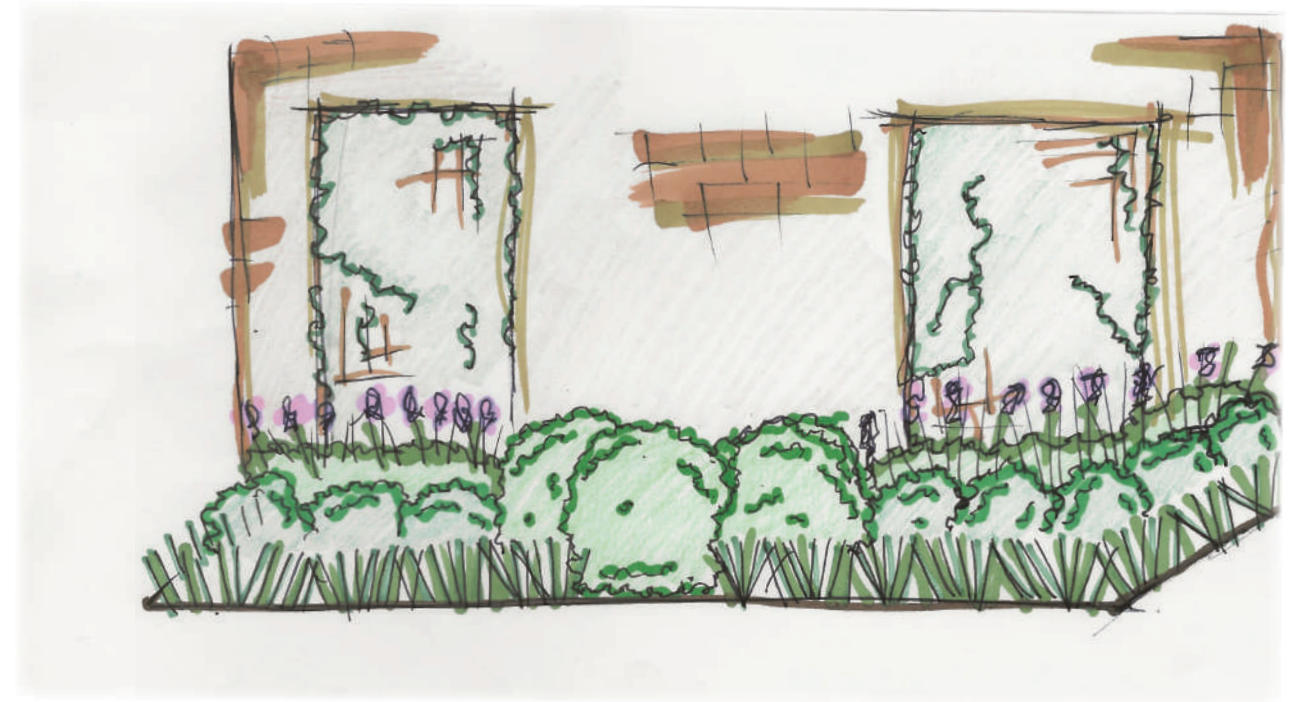
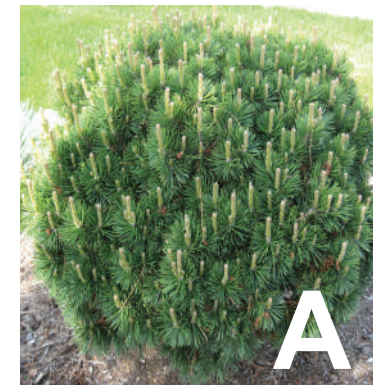


Shady Side Yard



This garden is well suited to a shaded side of the house. This garden provides year round interest through the use of Mugo Pines. This evergreen shrub retains its foliage throughout the winter season. Bright coloured perennials and vines provide summer interest. This garden requires frequent watering but is generally low maintenance. The vines and perennials selected in this garden come in a variety of different colours, providing the opportunity for you to select a colour palette best suited to your taste.



Dwarf Mugo Pine



Clematis Vine



Variegated Hosta



Vision in Pink Astilbe